



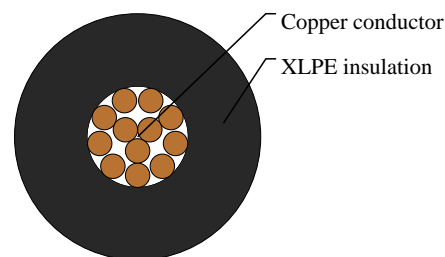
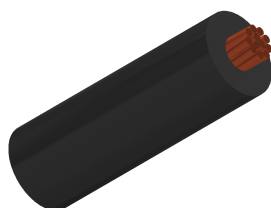
# Caledonian

Automotive Cables

[www.caledonian-cables.com](http://www.caledonian-cables.com)

[marketing@caledonian-cables.com](mailto:marketing@caledonian-cables.com)

## AEXHF 1C0.3



## APPLICATIONS

This XLPE insulated single-core cable is used in low voltage circuits in automobiles(vehicles and motorcycles), Superior heat resistance with irradiated PE superior more than thermal resistance AEX type.

## STANDARDS

ES SPEC

## CABLE CONSTRUCTION

Conductor: Tin coated annealed stranded copper.

Insulation: Cross-linked Polyethylene (XLPE)

Standard Compliance: ES SPEC

## PHYSICAL AND THERMAL PROPERTIES

Operating temperature: -40 °C to +150°C

Rated voltaage up to 60V

## DIMENSION AND PARAMETERS

No. of Cores × Cross- sectional Area	No. and Dia. of Wires	Diameter of Conductor (max.)	Nominal Insulation Thickness	Overall Diameter (min.)	Overall Diameter (max.)	Approx. Weight	Electrical Resistance at 20°C (max.)
No.×mm <sup>2</sup>	no./mm	mm	mm	mm	mm	kg/km	MΩ/m
1x0.3	12/0.18	0.7	0.5	1.7	1.8	5.7	61.1